

The Seashell Plan



New Zealand
Certified
Builders
Association



COASTAL HOMES



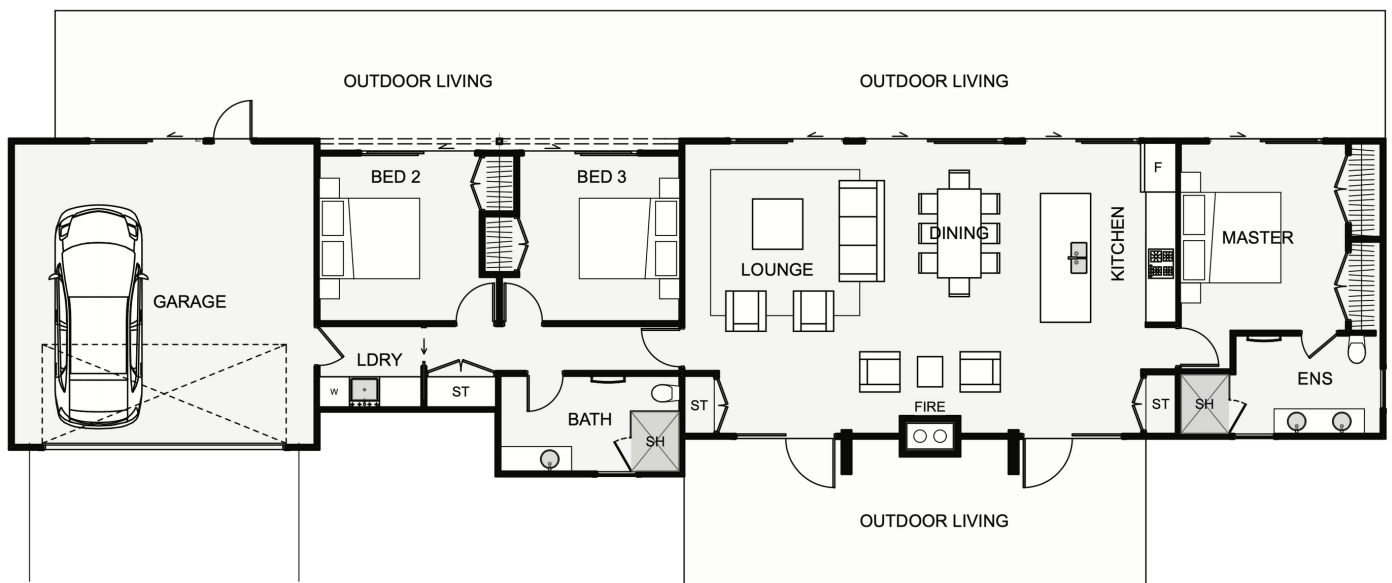
The Seashell is a narrow home designed to have all rooms facing the same way.

This makes it easy if you have a great lawn, a view or just want all rooms to get the same amount of sun throughout the day.

Something nice about this home is the glass doors and

overhead window in the garage, making this large space usable for parties, games room and more.

The dual outdoor living gives an option to end the day around a back-to-back fireplace, all while enjoying the evening sunset.



Floor area: 164m²
27.4m x 6.7m

Contact Lance Vale:
E: sales@coastalhomesnz.com
P: 021 222 4833
W: www.coastalhomesnz.com

COASTAL HOMES