

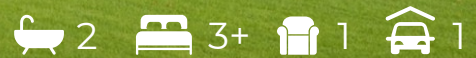
# The Petrel Plan



New Zealand  
Certified  
Builders  
Association



## COASTAL HOMES



The Petrel is a home that welcomes everyone.

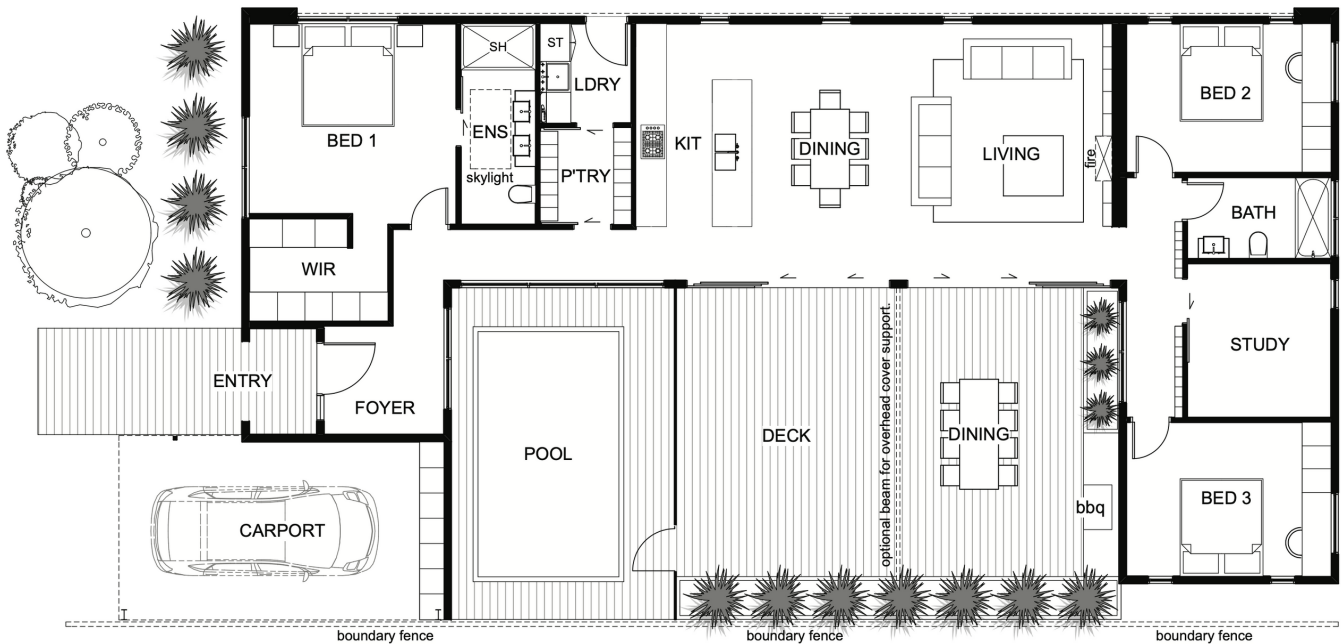
The indoor and outdoor living spaces are centrally located in the home and create a spacious integrated hub for just the family to relax or for family and friends to join together.

The master bedroom is at the front of the home,

offering the ultimate privacy.

The other bedrooms conveniently surround the main bathroom and are off a hallway on the opposite side of the living area.

The Petrel offers relaxing and stylish living on any budget.



Floor area: 148m<sup>2</sup>  
23.7m x 11.7m

Contact Lance Vale:  
E: [sales@coastalhomesnz.com](mailto:sales@coastalhomesnz.com)  
P: 021 222 4833  
W: [www.coastalhomesnz.com](http://www.coastalhomesnz.com)

