

The Angler Plan



New Zealand
Certified
Builders
Association



COASTAL HOMES



The Angler is an ideal home for a family that needs plenty of room.

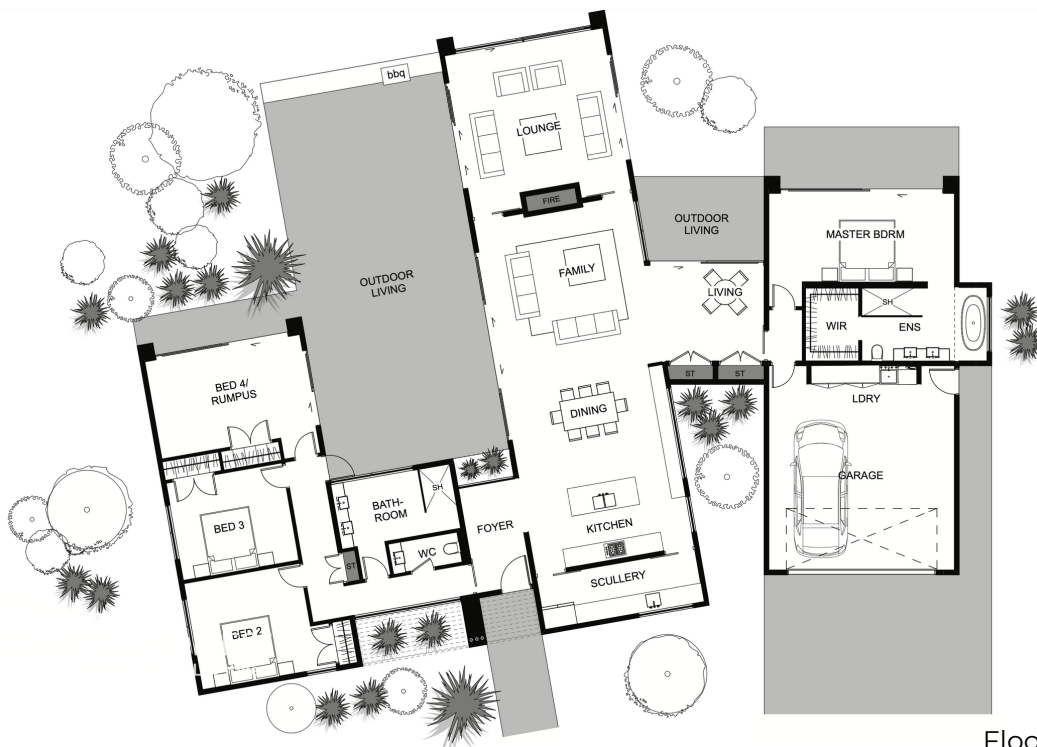
The master bedroom is privately located to the right of the living area with the secondary bedrooms located off a hallway and are conveniently clustered around the main bathroom.

The fourth bedroom could be either be a bedroom or

rumpus room making this the ideal house for anyone with young children or teenagers wanting their own space.

The kitchen is the perfect backdrop to entertaining guest with the addition of a scullery allowing plenty of space.

This is a home you will fall in love with.



Floor area: 283m²
26.5m x 19.4m

Contact Lance Vale:
E: sales@coastalhomesnz.com
P: 021 222 4833
W: www.coastalhomesnz.com

COASTAL HOMES