

The Gulf Plan



New Zealand
Certified
Builders
Association



COASTAL HOMES

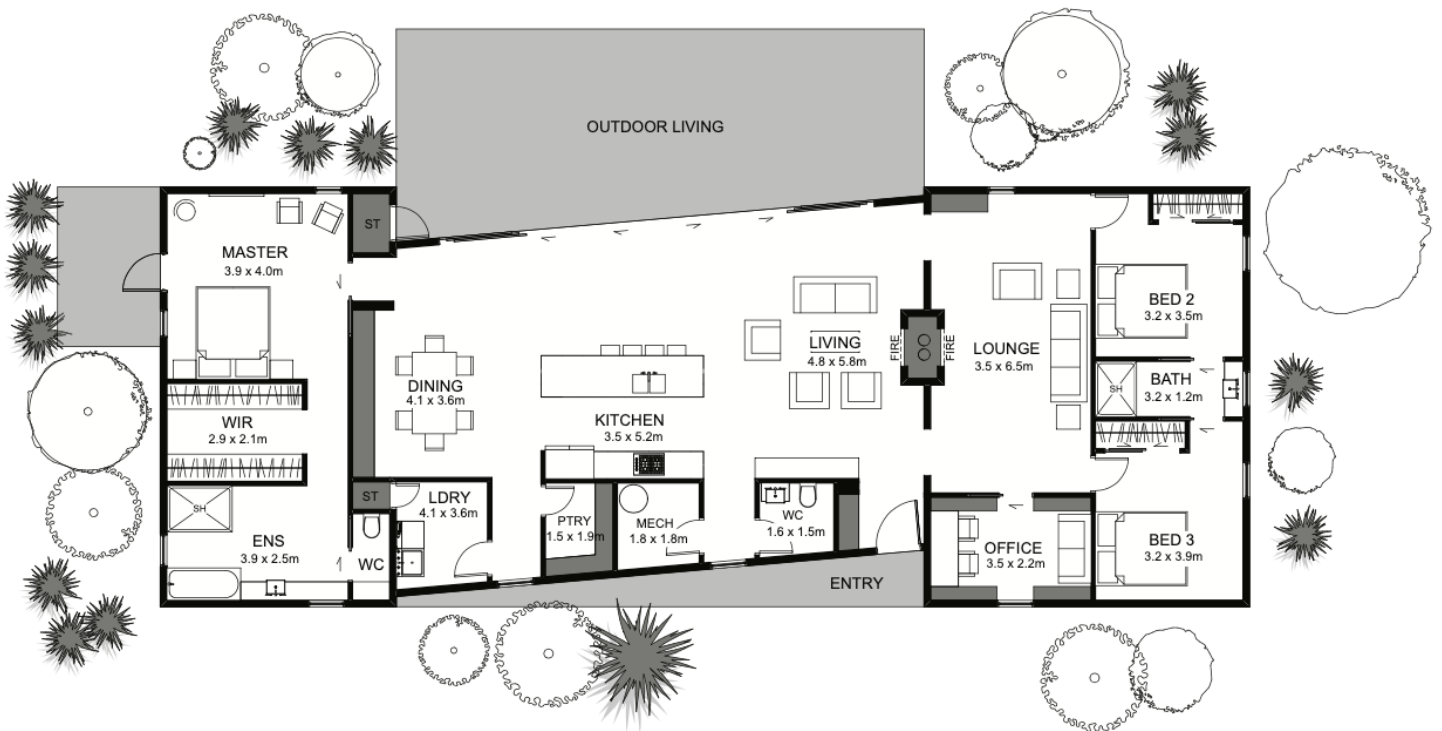


The Gulf has flexible and integrated living all under one roof.

The large central open plan kitchen, dining and living space provides an area to entertain and relax as a family.

An office near the bedrooms creates a space to ensure your home also supports the way you work and the master suite provides a getaway and space to relax.

The Gulf flawlessly combines home life, social life and work-life all within a rectangular frame.



Floor area: 199m²
23.6m x 9.1m

Contact Lance Vale:
E: sales@coastalhomesnz.com
P: 021 222 4833
W: www.coastalhomesnz.com

COASTAL HOMES