

# The Moorings Plan



COASTAL HOMES

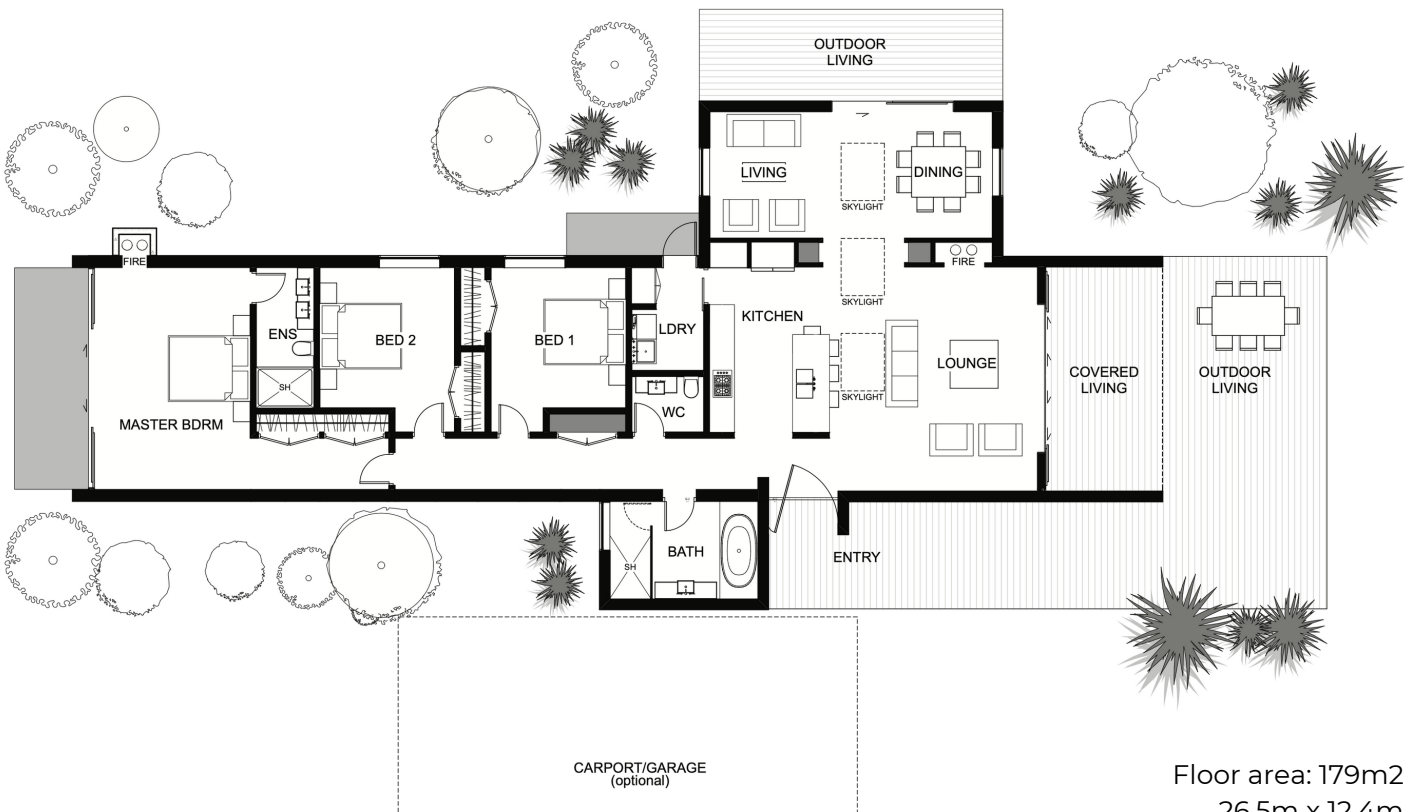
2
 3
 2
 0

The Moorings is a stylish single-storey home that all the family will enjoy.

An open plan kitchen and lounge flow seamlessly through to the outdoor entertainment area giving you extended entertaining space and the three skylights brighten the already sunny living areas with more

natural light. For ease of access and convenience, the laundry is located near the kitchen.

With the bedrooms close together and located away from living areas the Moorings is the perfect home for young families.



Floor area: 179m<sup>2</sup>  
26.5m x 12.4m

Contact Lance Vale:  
 E: [sales@coastalhomesnz.com](mailto:sales@coastalhomesnz.com)  
 P: 021 222 4833  
 W: [www.coastalhomesnz.com](http://www.coastalhomesnz.com)

COASTAL HOMES