

The Sand Bar Plan



New Zealand
Certified
Builders
Association



COASTAL HOMES

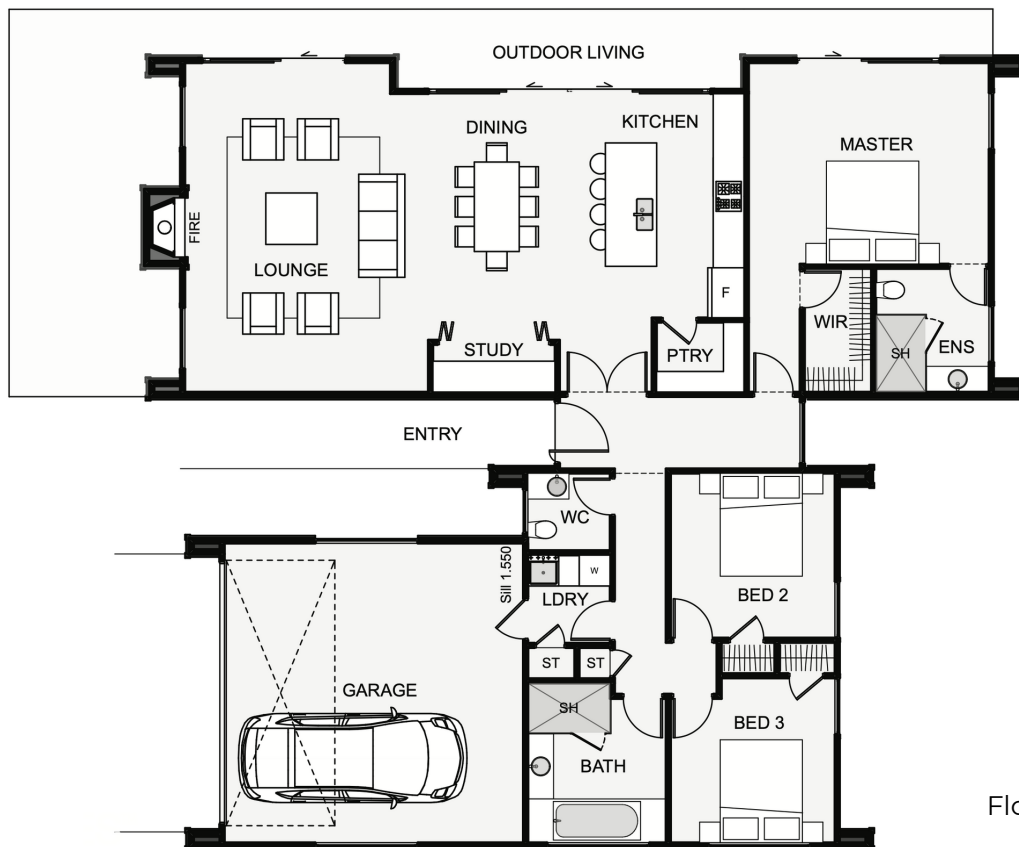


The Sand Bar is a standout architectural home, especially with its use of cladding.

The timber is positioned in the voids just like the flesh of the fruit when cut, while the metal wraps around the exterior like organic skin. The shape of the home, however, is very abstract.

The layout is comprised of two wings with bedrooms on each end, this is to give the bedrooms great morning sun coverage.

The lounge and living are positioned to make the most of sunlight right throughout the day.



Floor area: 190m2
17.1m x 15.3m

Contact Lance Vale:
E: sales@coastalhomesnz.com
P: 021 222 4833
W: www.coastalhomesnz.com

COASTAL HOMES