

The Mercury Plan



New Zealand
Certified
Builders
Association



The Mercury has some modern street appeal in its dark cladding and twin gable design.

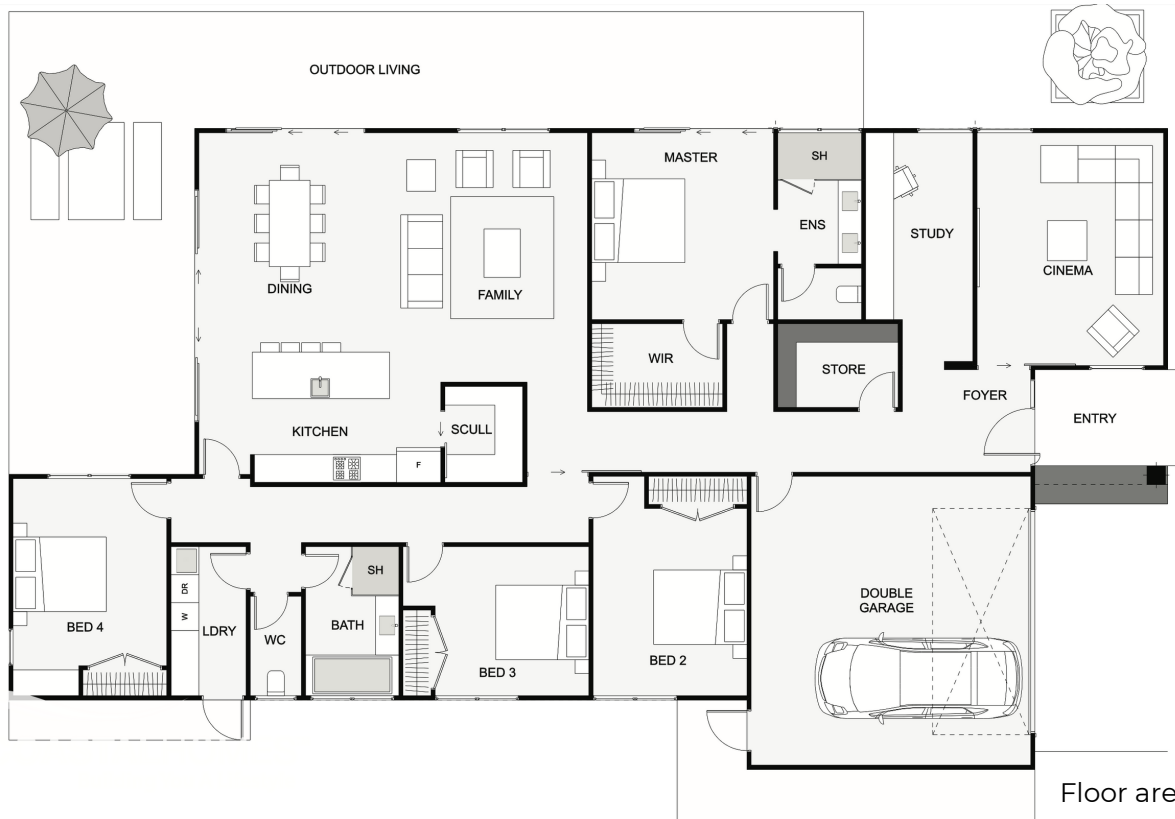
This home has two living spaces, each at opposite ends of the house, always handy!

Also included is a large study close to the entry, so great

if you work from home.

This home also includes a large laundry, a scullery and a living space that flows out to the outdoor living.

This home really does work as good as it looks!



Floor area: 265m²
24.9m x 13.8m

Contact Lance Vale:
E: sales@coastalhomesnz.com
P: 021 222 4833
W: www.coastalhomesnz.com

COASTAL HOMES