

The Bluff Plan



New Zealand
Certified
Builders
Association



COASTAL HOMES



This home is semi-symmetrical in shape, looks great with its length and includes very separate bedrooms.

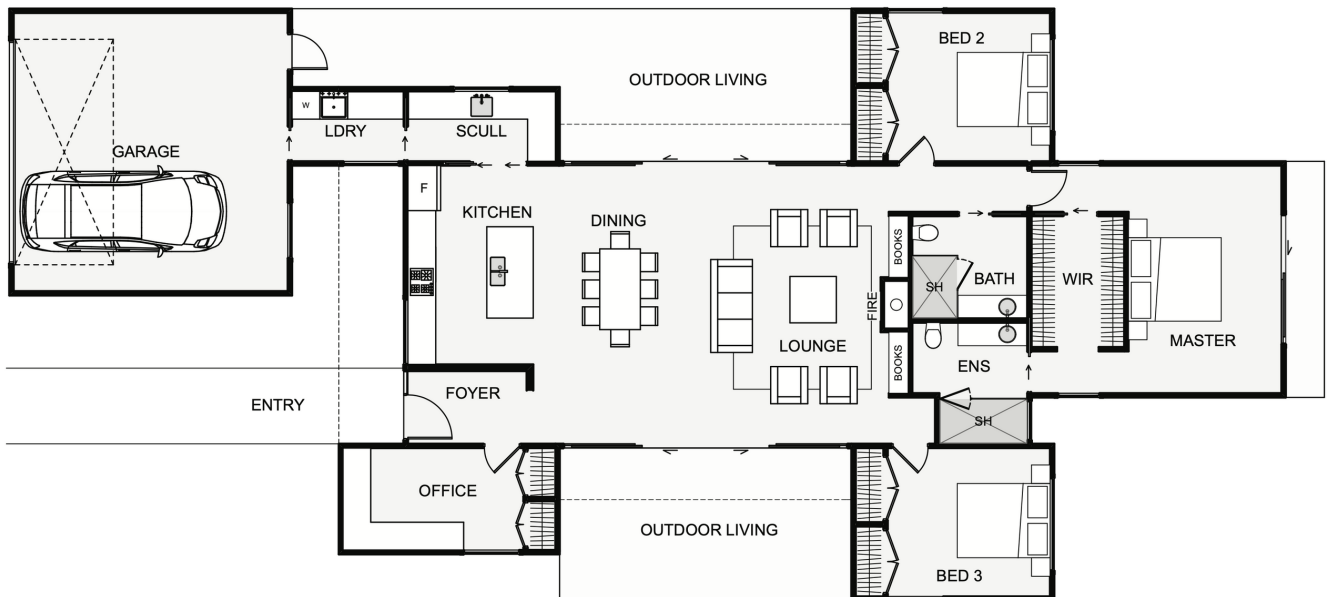
All bathroom plumbing is condensed in one location which keeps the pipework simple.

The scullery is cleverly located as you walk in from the garage and through the laundry making grocery

shopping a breeze.

The living layout is simple yet effective and depending on the day, wind or time, you can pick your outdoor spot of choice which are both sheltered in design.

The Bluff is a home with lots to offer.



Floor area: 198m²
27.5m x 12.8m

Contact Lance Vale:
E: sales@coastalhomesnz.com
P: 021 222 4833
W: www.coastalhomesnz.com

COASTAL HOMES