

The Anchorage Plan



New Zealand
Certified
Builders
Association



COASTAL HOMES



The Anchorage is a stunning home that incorporates a delightful and spacious living hub, providing plenty of room to relax as a family.

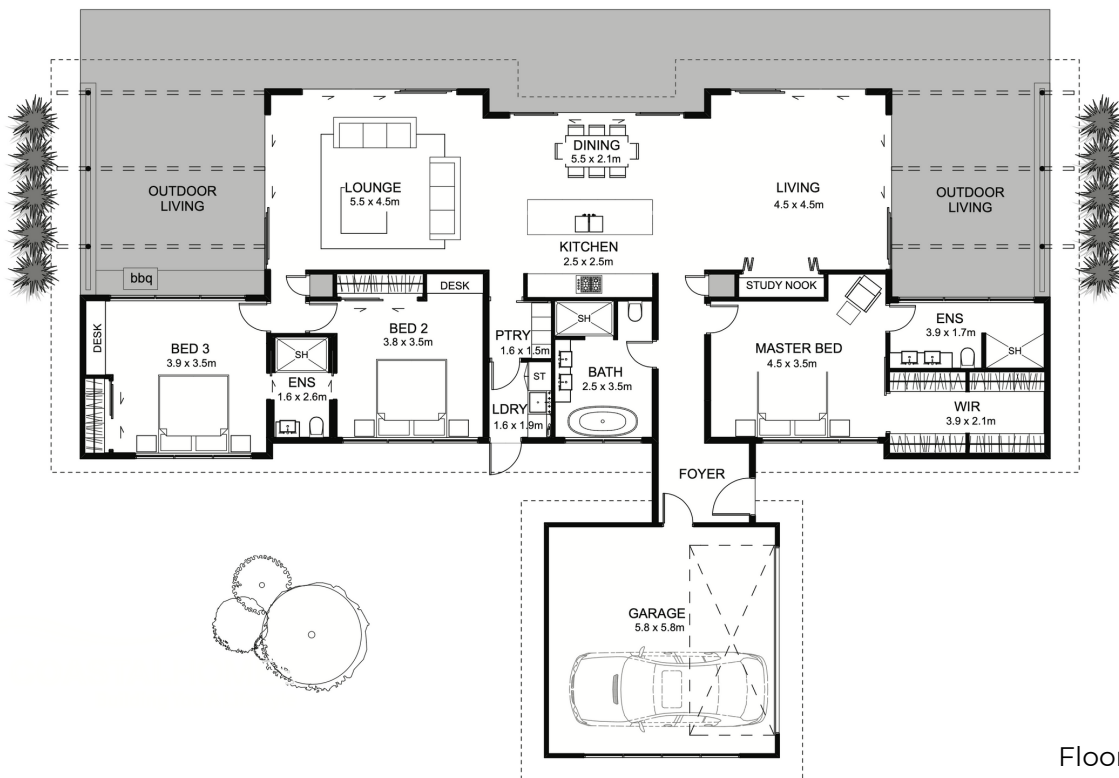
Large windows let the light flood in and there are covered outdoor entertainment areas on either side of the living hub, providing an entertainer's dream.

The kitchen features a walk through pantry which also

leads to a hidden and private laundry. Near the front entrance is a gorgeous master bedroom featuring a large walk-in wardrobe and ensuite.

The secondary bedrooms even share their own ensuite meeting the needs of any family.

The Anchorage delivers the full family home experience you need.



Floor area: 220m²
24.8m x 17.1m

Contact Lance Vale:
E: sales@coastalhomesnz.com
P: 021 222 4833
W: www.coastalhomesnz.com

COASTAL HOMES