

# The Coral Plan



New Zealand  
Certified  
Builders  
Association



## COASTAL HOMES

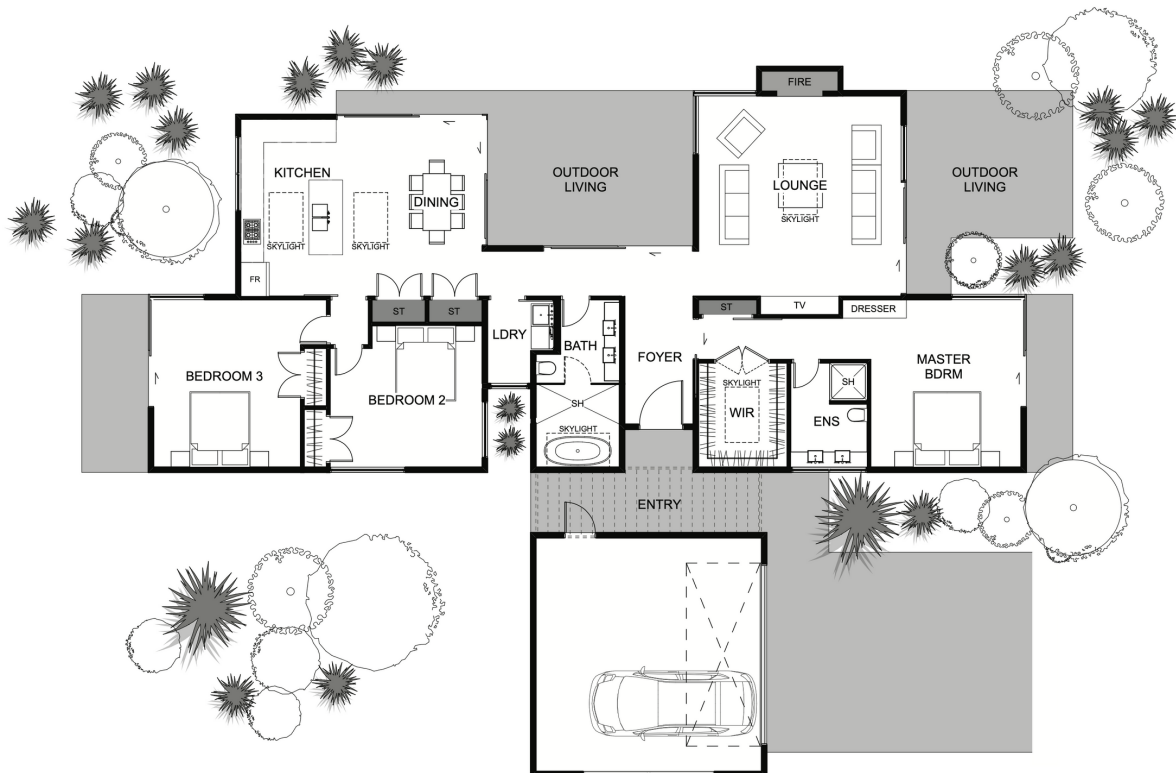


The Coral offers a complete package as a three-bedroom family home.

There is plenty of entertaining space with an open plan kitchen/dining area looking out to outdoor living space and a separate private lounge perfect for when the family comes together or when guests come around.

Situated near the entry is the master bedroom that promises privacy and relaxation complete with an impressive walk-in wardrobe and inviting ensuite.

The Coral sets a new vision for family living.



Floor area: 178m<sup>2</sup>  
23.4m x 18.9m

Contact Lance Vale:  
E: [sales@coastalhomesnz.com](mailto:sales@coastalhomesnz.com)  
P: 021 222 4833  
W: [www.coastalhomesnz.com](http://www.coastalhomesnz.com)

## COASTAL HOMES