

# The Driftwood Plan



New Zealand  
Certified  
Builders  
Association



COASTAL HOMES

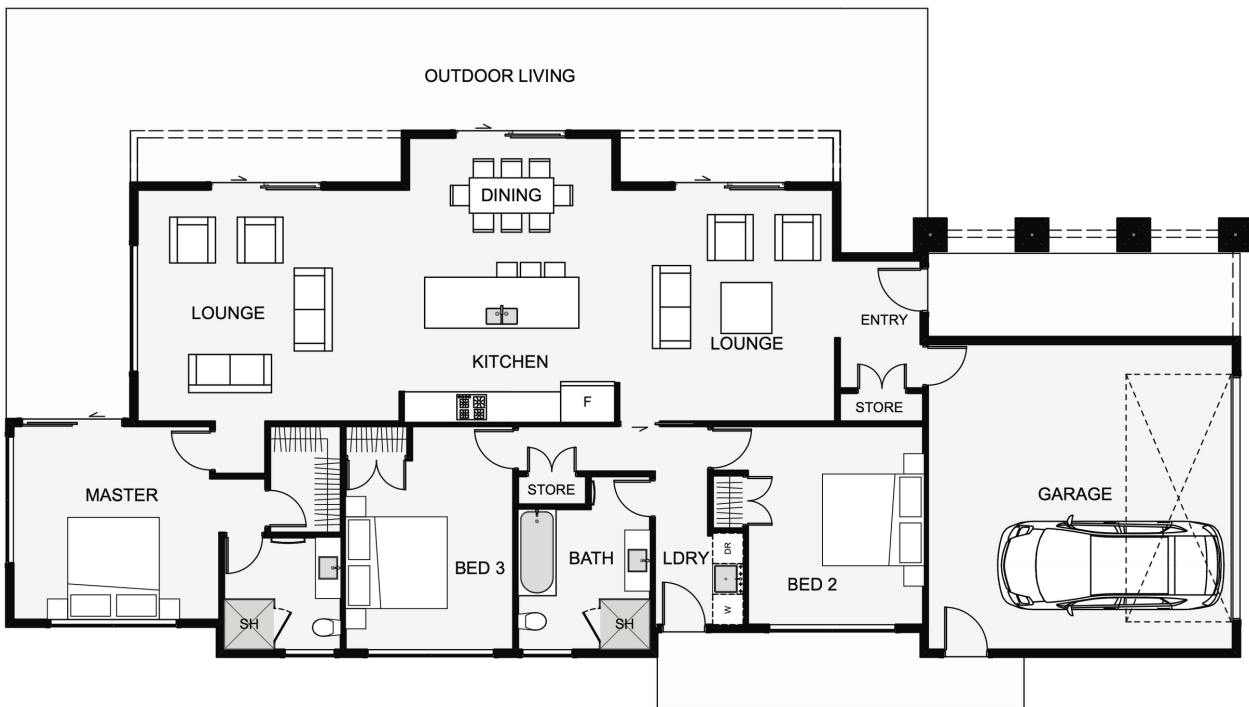


The Driftwood is a home designed for narrow sections, however, wider sections will just enlarge the outdoor living space which is a great bonus.

This home has a number of things going for it, such as the grand covered entry, the dual lounges and the high ceilings in both lounges and the dining.

Fixed sunshades provide not only practical uses but an architectural, aesthetic finish to the home.

A variation of claddings can be used to give you the desired look or the materials you love.



Floor area: 193m<sup>2</sup>  
24.3m x 10.3m

Contact Lance Vale:  
E: [sales@coastalhomesnz.com](mailto:sales@coastalhomesnz.com)  
P: 021 222 4833  
W: [www.coastalhomesnz.com](http://www.coastalhomesnz.com)

COASTAL HOMES