

# The Bream Tail Plan



New Zealand  
Certified  
Builders  
Association



## COASTAL HOMES

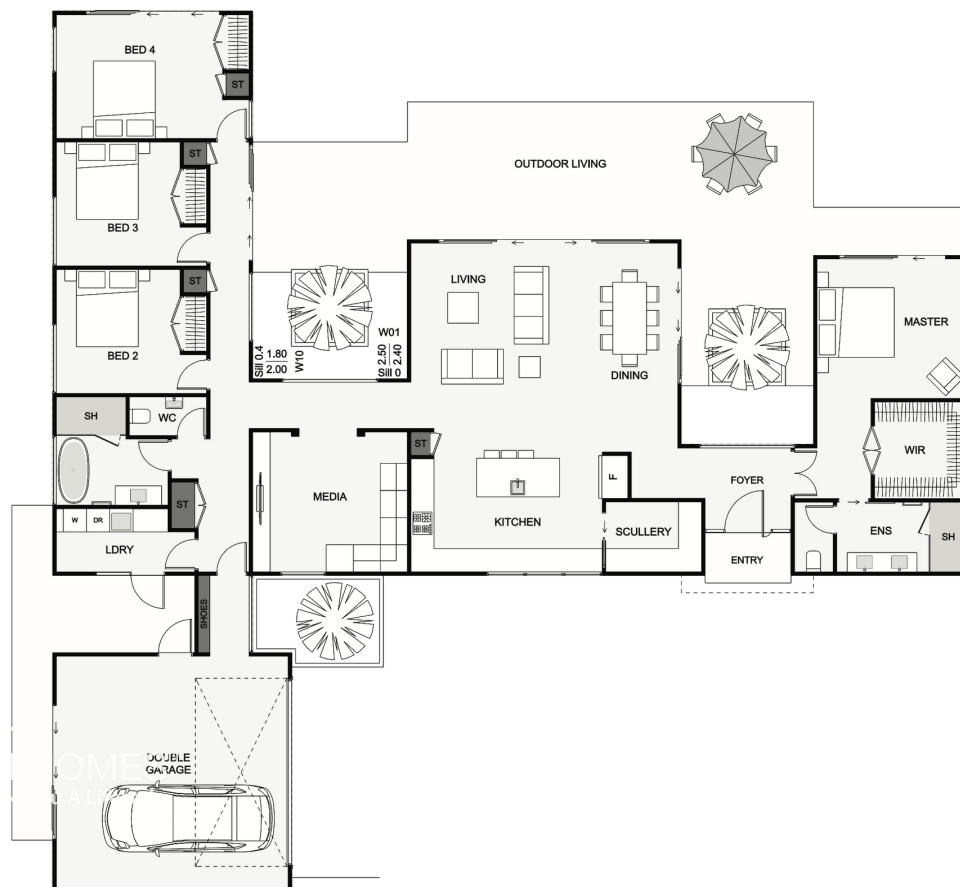


This three-winged home will look stunning on a larger section.

The Bream Tail is perfect for families who favour a master bedroom at one end and guest or children's bedrooms at the other.

The kitchen, spacious living and media rooms are positioned in the heart of the home and the outdoor living links everything together.

With the Bream Tail, you can be sure it will be loved for years to come!



Floor area: 241m<sup>2</sup>  
23.8m x 22.8m

Contact Lance Vale:  
E: [sales@coastalhomesnz.com](mailto:sales@coastalhomesnz.com)  
P: 021 222 4833  
W: [www.coastalhomesnz.com](http://www.coastalhomesnz.com)

# COASTAL HOMES